

SOCCER EST. 2005 **SOCCER TRAINING EQUIPMENT** **INNOVATIONS**

MVP III TEAM SHELTER User Instructions Manual



SOCCERINNOVATIONS.COM

INSTRUCTIONS

Tools Required: Rubber Hammer, Ratchet Wrenches, Pliers, Allen Wrench and Portable Drill.

Note: Initial Set up requires at least 2 adults.

Note: Initial Set up should take approximately 1-2 Hours.

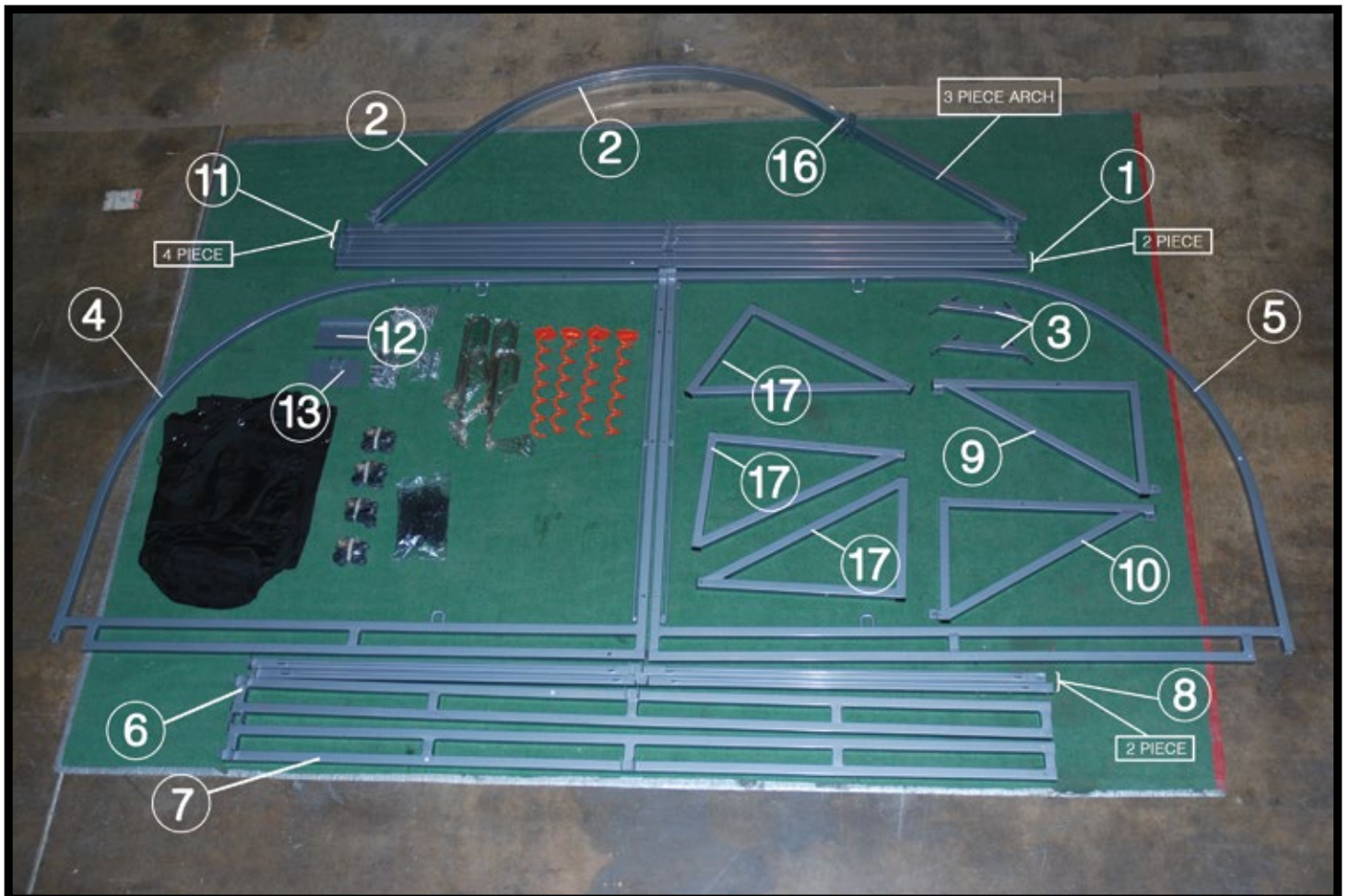
Note: Make sure Bolt's Head is always facing outside to protect cover.

Caution: Failure to follow assembly instructions may result in damage to frame and/ or cover.

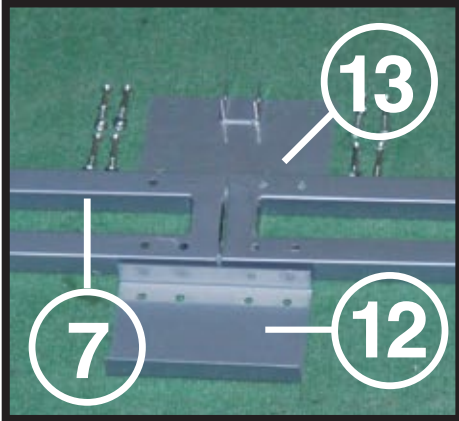
Caution: Always ensure Team Shelter is securely and properly anchored to prevent tipping, resulting in damage to frame and/ or cover.

Caution: Remove Cover or store Team Shelter in a protected area during threat of high winds.

PARTS



STEP 1



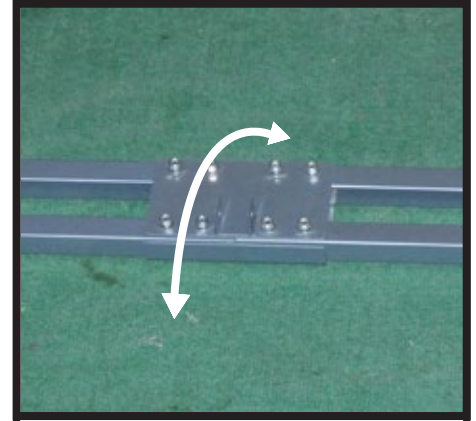
Place parts **13, 12 and 7 (2 pieces)** following the image above.

A



Line up pre-drilled holes and secure with bolt for parts **13, 12 and 7 (2 pieces)** following the image above.

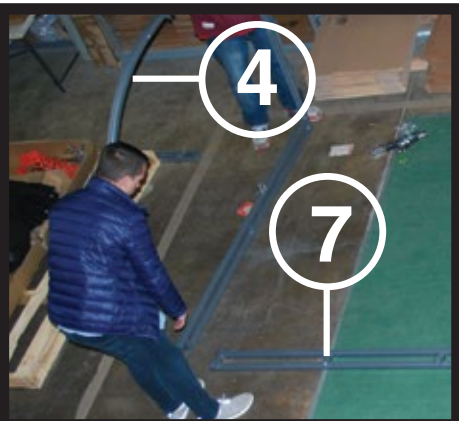
B



Once all parts are secure, **turn the entire piece and make sure is facing up**, following the image above.

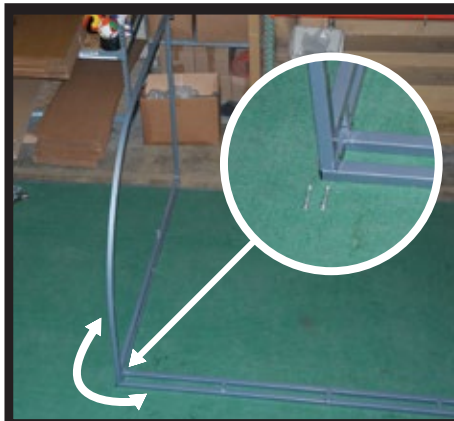
C

STEP 2



Once the piece from step 1 is facing up, place parts **4 and 7 (Left side)** following the image above.

A



Line up pre-drilled holes and secure with bolt for parts **4, and 7** following the image above.

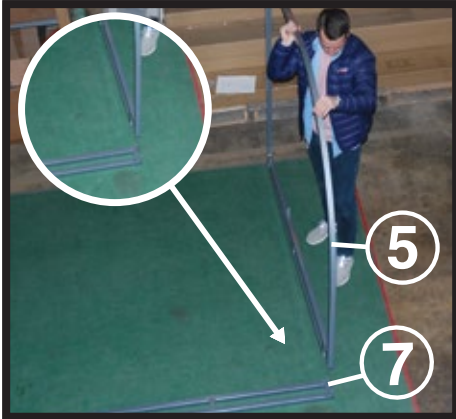
B



Once all steps have been followed **make sure all parts are secure**, then proceed to next step.

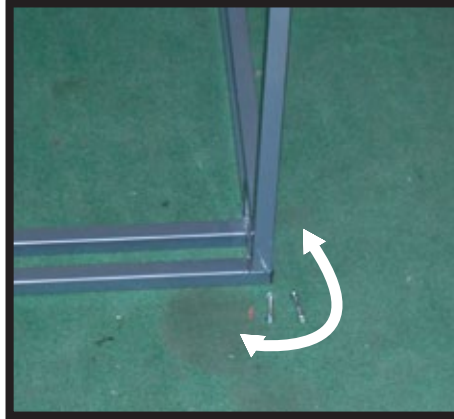
C

STEP 3



Place parts **5 and 7 (Right side)** following the image above.

A



Line up pre-drilled holes and secure with bolt for parts **5 and 7** following the image above.

B



Once all steps have been followed, **make sure all parts are secure**, then proceed to next step.

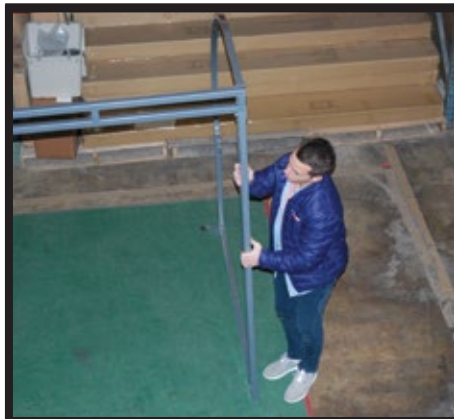
C

STEP 4



Grab the **entire piece from both sides and flip it over**, following the image above

A



After flipping the entire piece, **make sure is straight and firm**, following the image above.

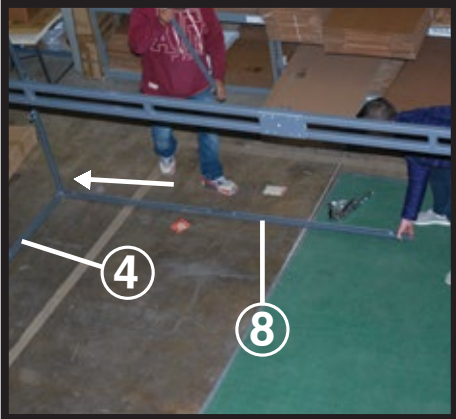
B



Once all steps have been followed **make sure all parts are secure**, then proceed to next step.

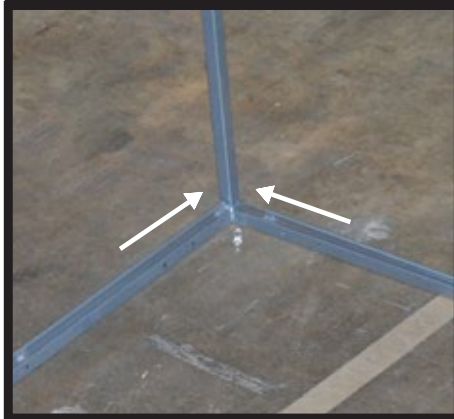
C

STEP 5



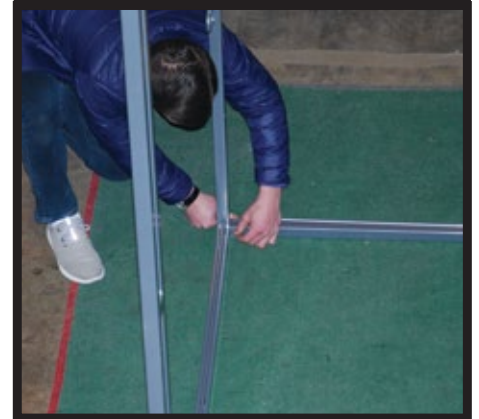
Place part **8 (Left side)** next to **4** following the image above.

A



Line up pre-drilled holes and secure with bolt for parts **8 and 4** following the image above.

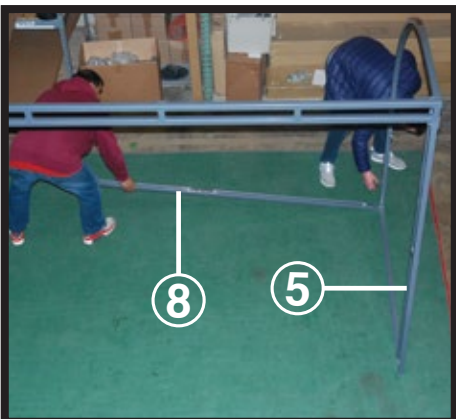
B



Once all steps have been followed, **make sure all parts are secure**, then proceed to next step.

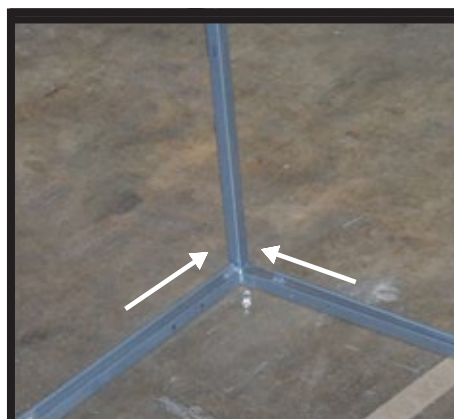
C

STEP 6



Place part **8 (Right side)** next to **5** following the image above.

A



Line up pre-drilled holes and secure with bolt for parts **8 and 5** following the image above.

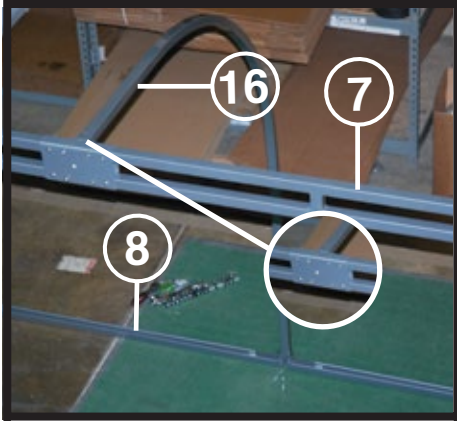
B



Once all steps have been followed **make sure all parts are secure**, then proceed to next step.

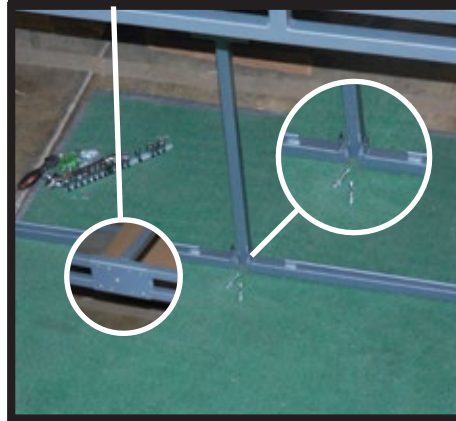
C

STEP 7



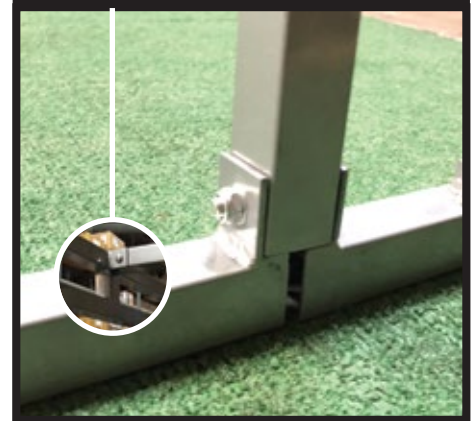
Place part **16 (Middle arch)** between **8 (Left & Right side)** and **7 (Left & Right side)** following the image above.

A



Line up pre-drilled holes and secure with bolt for parts **16, 7 and 8** following the image above. Repeat for remaining parts (**2 piece arch**).

B



Once all steps have been followed, **make sure all parts are secure**, then proceed to next step.

C

STEP 8



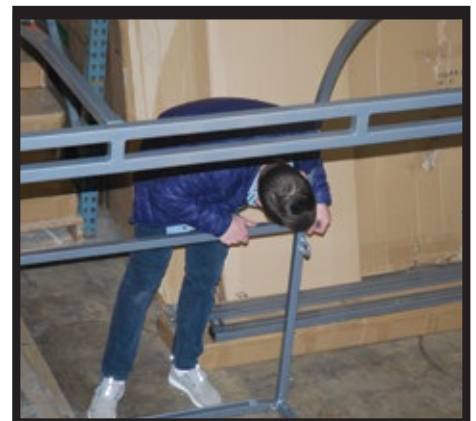
Place part **1 (Right side)** next to **5, 2 and 16** following the image above.

A



Line up pre-drilled holes and secure with bolt for parts **1, 5, 2 and 16** following the image above.

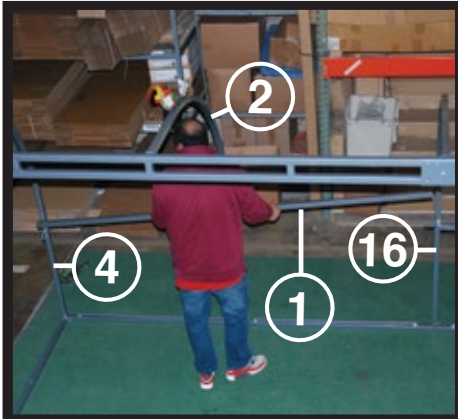
B



Once all steps have been followed **make sure all parts are secure**, then proceed to next step.

C

STEP 9



Place part **1 (Left side)** next to **4, 2 and 16** following the image above.

A



Line up pre-drilled holes and secure with bolt for parts **1, 5, 2 and 16** following the image above.

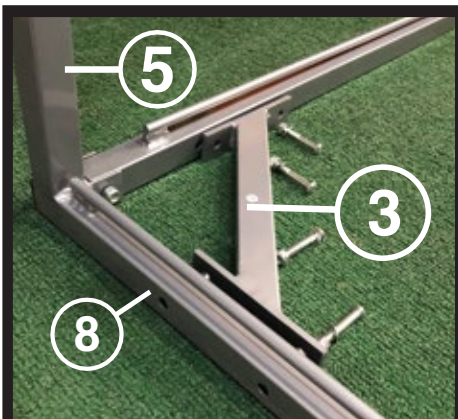
B



Once all steps have been followed **make sure all parts are secure**, then proceed to next step.

C

STEP 10



Place part **3 (Right side)** next to **5 and 8** following the image above.

A



Line up pre-drilled holes and secure with bolt for parts **3, 5 and 7** following the image above. Repeat on the left side.

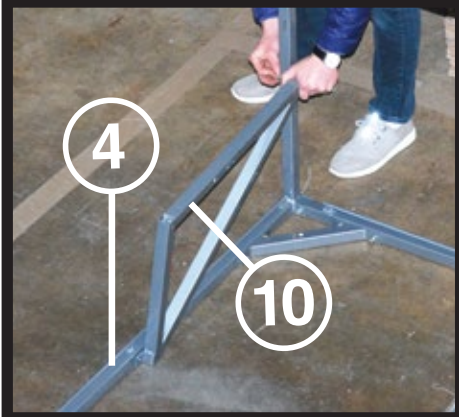
B



Once all steps have been followed **make sure all parts are secure**, then proceed to next step.

C

STEP 11



Place part **10 next to 4** following the image above.

A



Line up pre-drilled holes and secure with bolt for parts **10, and 4** following the image above.

B



Once all steps have been followed **make sure all parts are secure**, then proceed to next step.

C

STEP 12



Place part **9 next to 5** following the image above.

A



Line up pre-drilled holes and secure with bolt for parts **9, and 5** following the image above.

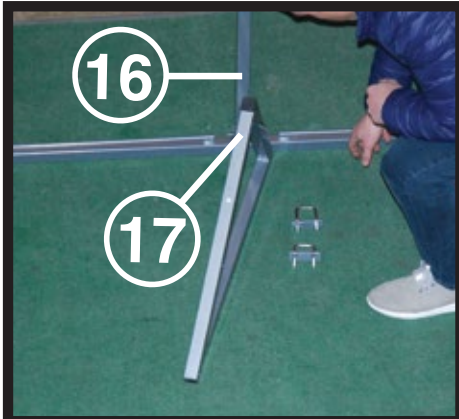
B



Once all steps have been followed **make sure all parts are secure**, then proceed to next step.

C

STEP 13



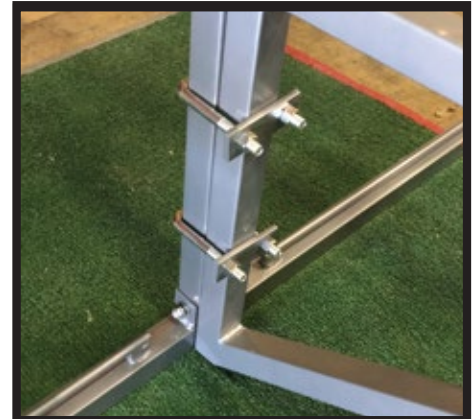
Place part **17** next to **16** following the image above.

A



Line up part **17** with **16** and secure using two **C-bracket**, following the image above. Repeat for the remaining **17** parts.

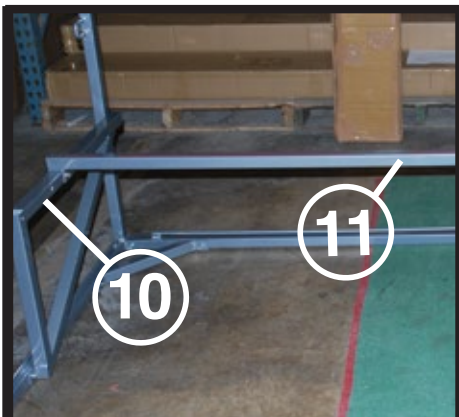
B



Once all steps have been followed **make sure all parts are secure**, then proceed to next step.

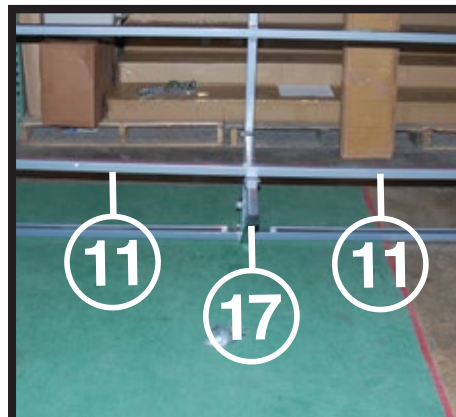
C

STEP 14



Place part **11** on top of **10** and **17** following the image above.

A



Line up pre-drilled holes and secure with bolt for parts **11**, **10** and **17** following the image above. Repeat on the other side.

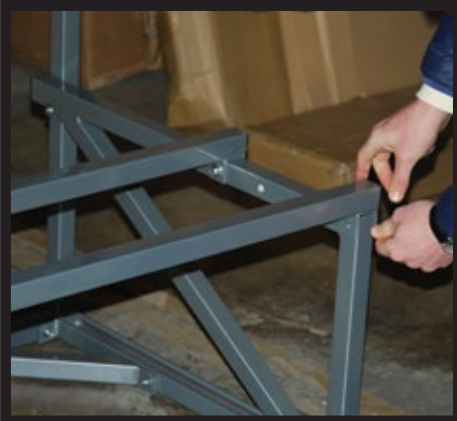
B



Once all steps have been followed **make sure all parts are secure**, then proceed to next step.

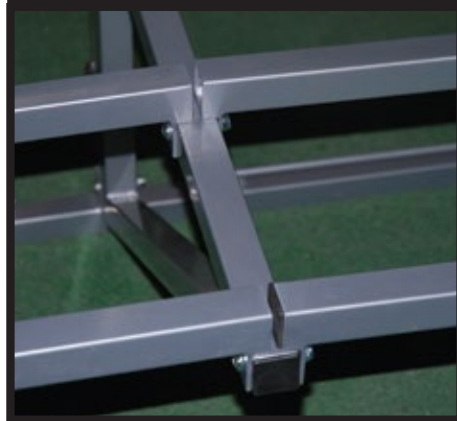
C

STEP 15



Place part **11** on top of **9** and **17** following the image above.

A



Line up pre-drilled holes and secure with bolt for parts **11, 9 and 17** following the image above. Repeat on the other side.

B



Once all steps have been followed **make sure all parts are secure**, then proceed to next step.

C

STEP 16



Place wood seat on top of **5** and **17** following the image above.

A



Line up pre-drilled holes and **secure the seat with screws**, following the image above.

B



Once all steps have been followed **make sure all parts are secure**.

C

STEP 17



Place and align **Wheel Bracket** to front corner of Frame.

A



Attach **Wheel Bracket to Frame** using included nuts, bolts, washers and spacers.

B



Attach **Wheel to Wheel Bracket**, Following the image above, then proceed to next step.

C

STEP 18



Attach **nut to wheel bracket's bolt**, following the image above.

A



When the **first wheel is set**, Repeat same steps on opposite side.

B



Once all steps have been followed **make sure all parts are secure.**

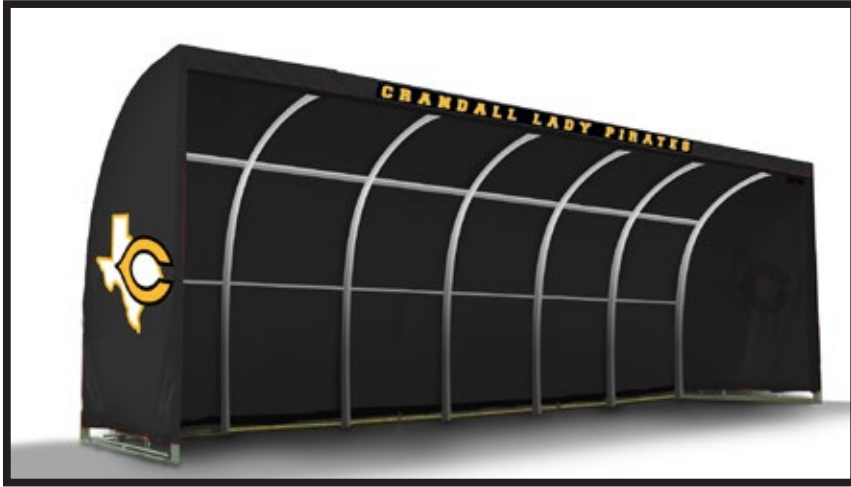
PREVIEW



IMPORTANT

Once all steps have been followed this is how the **MVP Team Shelter should look**, if your product doesn't look like the image above, you can find a step by step video walkthrough of how to assemble MVP Team Shelter at <https://youtu.be/-Wt7zOA00f8>

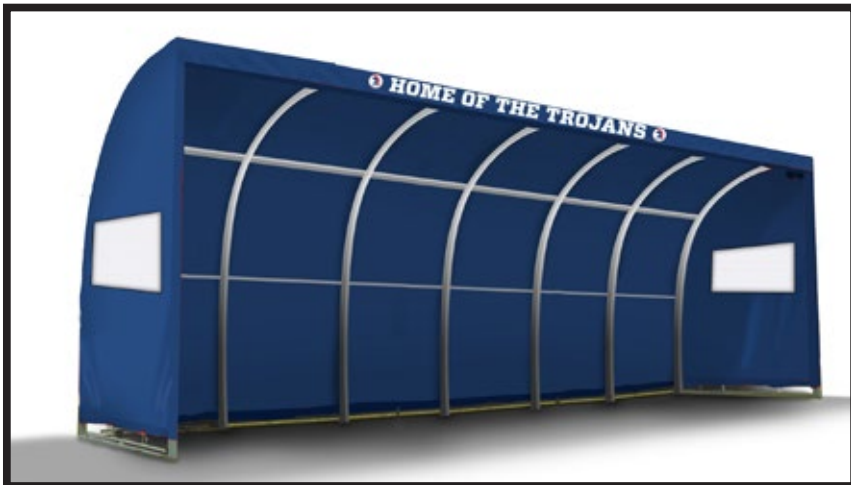
MORE



CUSTOM LOGOS



CUSTOM COLORS



**ADD ZIPPERED SIDES
OR CUSTOM WINDOWS**

SOCCKER EST. 2005
SOCCKER TRAINING EQUIPMENT
INNOVATIONS